

OTTOJUNKER
WE UNDERSTAND METALS

History



„Determine all problems impartially, find a solution through joint academic and industrial enterprise, and deliver the result to the customer in the form of quality products.“

(Dr.-Ing. E. h. Otto Junker)

- founded in 1924 by Otto Junker
- since 1982 owned by the Otto-Junker-foundation
- very close partnership with Aachen university
- world wide roughly 700 employees
- locations and cooperation partners:
 - **Germany**
 - Simmerath
 - **Czech Republic**
 - Boskovice
 - **China Beijing**
 - Shanghai
 - **Dubai**
 - **USA**
 - OTTO POWER Joint Venture in Detroit
 - Chicago
 - **Brazil**
 - Bernardo do Campo
- **agencies - worldwide**



High grade steel foundry



High Grade steel foundry producing sandcasting up to 17 tons. Also machining of big parts



Induction melting and pouring



Engineering and production of induction melting- and pouring plants for iron, steel, copper, aluminum, silicon und magnesium



Thermal processing plants



Engineering and production of thermal processing plants for semi-finished parts made from copper and aluminum



High grade steel foundry



Induction melting and pouring

100 %

INDUGA GmbH & Co KG, D

100 %

OJ Solutions GmbH, D

Office Dubai, VAE

Thermal processing plants

100 %

JUNKER Inc., USA

50 %

OTTO POWER LLC, USA

100 %

Junker Metallurgical Shanghai, VRC

100 %

Office Beijing, VRC

JUNKER Industrial Equipment s.r.o., CZ

High grade steel foundry

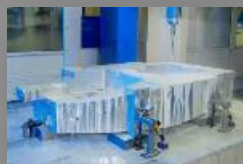
fire bars



ring containers



**microchip -
industry**



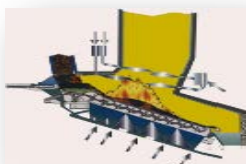
jobbing castings



machining



waste incineration



beverage bottling



**microchip
production**



**mechanical engineering, ship building,
plant engineering**

Induction melting, holding and pouring

melting



holding

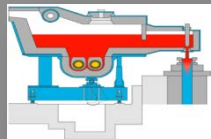


pouring

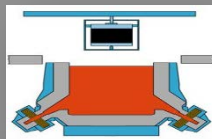


Induction melting, holding and pouring (INDUGA)

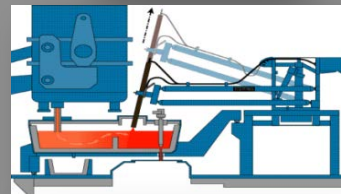
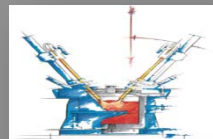
**melting, holding
and pouring**



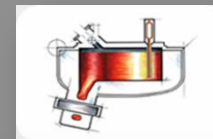
steel coating



**plasma ladle
heating**



**low-pressure die
casting**



Thermal processing plants

aluminum rolling mills



copper rolling mills



extrusion plants



Research and development / team and collaborations



Thinking
the future.

RWTH AACHEN
UNIVERSITY



- R&D is carried out **systematically** and **application-orientated** at OTTO JUNKER. This is done by highly qualified engineers.

- **Fundamental research** and **simulations** are carried out in close cooperation with Aachen university.

Example: Predictions of grain growth under influence of temperature and time

- **Application-orientated** bachelor- and master-thesis' are carried out frequently in close cooperation with the Aachen university of applied sciences.

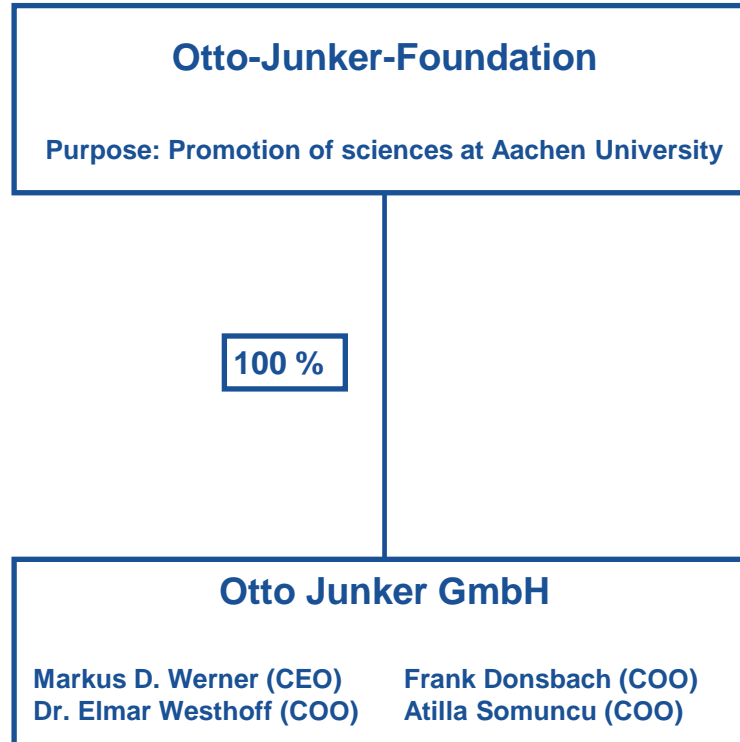
Example: Development of **Welding Procedure Specification** for fans

The Otto-Junker-Foundation is the sole associate



„Determine all problems impartially, find a solution through joint academic and industrial enterprise, and deliver the result to the customer in the form of quality products.“

(Dr.-Ing. E. h. Otto Junker)



OTTOJUNKER
WE UNDERSTAND METALS